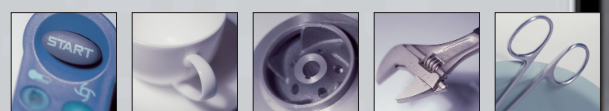




DEKO 190 LC  
Ward Washer-disinfector





## Large capacity

The DEKO 190 LC has a large wash chamber with the capacity for the automatic emptying and processing of 2 bedpans with lids and 4 urine bottles simultaneously. The integrated drop down shelf provides space for 4 hand wash basins or a mop bucket. The shelf can also be utilised as a base to accommodate inserts and washing accessories to process e.g. kidney dishes, bowls, raised toilet seats, vases, toilet brushes / holders, as well as various hollowware. Using optional holders and baskets enables the correct positioning and easy loading of various items, eg; suction jars, & medicine pots extending the DEKO 190's capacity and versatility.

## Superior performance

The DEKO 190 LC is designed and constructed to exceed the standard performance and design requirements stated in ISO EN 15883-1 Washer-disinfectors - Part 1: General requirements and Part 3: Requirements and tests for washer-disinfectors employing thermal disinfection for human waste containers, together with the safety requirements stated in IEC 61010-2-040: Particular requirements for washer-disinfectors used in medical, pharmaceutical, veterinary and laboratory fields.

DEKO 190 LC is intended for emptying, flushing, cleaning and thermally disinfecting by steam, human waste containers intended for re-use such as;

- portable sanitary pans
- supports for single-use bedpans
- hospital wash bowls
- urine bottles
- mop buckets
- suction bottles
- measuring jugs
- and all other reusable products used for similar purposes within patient care

Process results are guaranteed throughout:

- water pressure for washing is supplied by a high powered 600L/min recirculation pump.
- detergent is dosed into the re-circulated wash water by a pump. The unique working principle facilitates cleaning and steam disinfection of the entire system including wash chamber, water tank and outlet with the minimum usage of water and energy.
- disinfecting steam is generated by an integrated unpressurised boiler and run through the water tank, outlet and internal pipework.
- a wide selection of disinfection temperatures and cycle set-ups to secure the microbial inactivation impact.

Cycles can be altered to meet almost any special requirement, though the standard requirements are met with the fixed, tested and approved cycles pre-programmed by the manufacturer. The 3-level access code system protects any unauthorized changes to the set parameters.

The washing spray patterns are delivered through 3 rotating + 7 fixed spray jets guaranteeing contact with all surfaces and crevices of items with varying design.



## Latest technology

The DEKO 190 LC presents the latest technology in user interface applications in washer-disinfectors. The high brightness 2x20 character backlit LCD information & control panel provides the means to view cycle information in real time i.e. cycle and phase name, temperature and remaining cycle time. The intelligent software provides you with advice on service actions. The maintenance and service file system restores valuable information for technical performance follow-up and evaluation.

## Ease of use

The DEKO 190 LC's door is locked securely throughout the cycle by an automatic locking system. Clear text on the display and a green indicator light will advise when the door is unlocked for opening. An audible indicator may be added to draw attention to the ending of the cycle.

An automatic 'Non-Touch' door activated by an optical sensor is available as an option.





## Traceability and verification to fit your system requirements

In order to guarantee that the values of the critical process variables were truly obtained and as programmed, the Deko 190 LC is equipped with Level A or, optionally B - independent process verification system (Please see ISO EN15883-1).

The critical process values i.e. temperatures, times, pressures, detergent dosage, faults, as well as descriptive cycle data, can be independently recorded for your Quality Assurance System by an optional process verification ink printer.

Archive information includes: name of your institution, date & time, machine identification, cycle number, selected cycle's name, phase descriptions, detergent dosage stage, chamber temperature throughout the process, washing pressure and faults.

## Reliable quality

The DEKO 190 LC is manufactured of quality polished stainless EN 1.4301 steel, it is easy to keep clean and can withstand continuous use. Galvanised and painted metals and other non-compatible materials are totally avoided in the manufacture of the 190 LC. Special attention has been paid to sound and heat insulation by using the most efficient and environmentally friendly materials.

Durability and reliability in continuous, heavy and busy institutional operating circumstances have been the key factors in the design of the Deko 190 LC.

As an example of a printout only.

Cycle Report  
 Owner: PMK Hospital  
 Machine: 4  
 Cycle Name: BEDPAN  
 Cycle number: 1452  
 Cycle start time: 06-08-17 15:45:03  
 15:45:10 CW flush started  
 15:46:00 CW flush ended  
 15:46:03 Mix water flush started  
 15:46:34 Mix water flush ended  
 15:46:37 Wash started  
 15:47:26 Chem flow OK  
 15:47:30 Chem : set 30 ml  
 T: 47 OC  
 15:48:30 Wash ended  
 15:48:33 Rinse started  
 15:49:30 Rinse ended  
 15:49:33 Disinfection 90 OC started  
 15:55:26 Temperature attained  
 T: 93 OC  
 15:56:26 Disinfection ended  
 T: 91 OC  
 15:56:31 Disinfection time 60 s  
 15:56:41 Descale dosed  
 Cycle end time: 06-08-17 15:56:45  
 Cycle passed

\_\_\_\_\_  
 Signature



# Summary of features

- overall dim. W600xD630xH1460 ±10 mm
- usable wash chamber dim. W480xD360xH640 mm
- powerful circulation water pump, output 600 L/min
- all stainless steel chamber, framework and panels
- fully automatic logic control including back-up batteries for full memory protection
- cycle selection & start keys
- text readout & green LED light to indicate cycle completion
- fault indication
- multi-level access code system. Special codes for: user, maintenance, authorized person
- practically unlimited number of pre-set cycle library
- customised cycle files
- access to regulation of critical process parameter values with authorized person entry code only
- 2x20 character backlit LCD high brightness information display
  - in-process indication
  - cycle & phase information in text format
  - remaining cycle time
- audible cycle end indicator
- special service and maintenance control system
- sound and heat insulated
- active vapour condenser
- height adjustable feet
- back syphon Type A air gap protection (note national requirements)
- drain outlet diameter 90-100 mm
- independent process tamper-proof verification recording system
- information:
  - name of institution
  - date & time
  - machine identification
  - cycle start and end time
  - temperature recording
  - detergent dosage flow verification
  - pressure registering
  - fault identification and registering
  - non-resettable cycle number
  - cycle name and configuration
- updates via a PC
- 3 rotating + 7 fixed wash jets automatically pumped detergent dosage
- indication for insufficient volume of detergent to complete cycle
- integrated detergent container housing
- boss entry port for test temperature sensor leads
- load temperature protection and over temperature cut-outs
- automatic foam and washing water pressure control system
- opaque cold and hot water connection hoses ½" BSP
- calibration of temperature sensors
- step by step manual override
- component test mode
- fault listing
- malfunction identification by coding
- adjustment of controls

## Options:

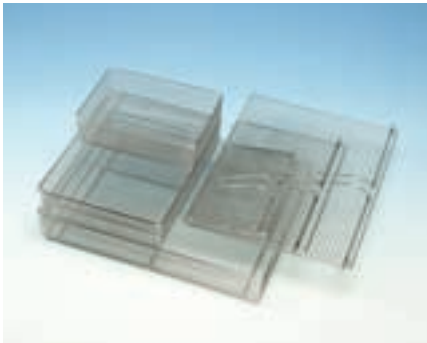
- independent detergent flow verification
- integrated Process verification serial ink printer for a permanent record of the process details
- descaling dosage pump
- lockable door for chemical container opening
- automatic non-touch door with an optical sensor

# Accessories

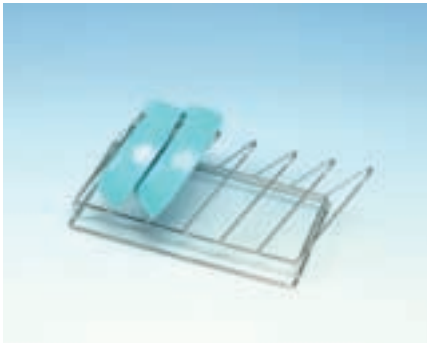
1



2



3



4



5



1. 381170 Utensil basket with a lid  
– dim. 340x250x200 mm

2. 381220 Instrument tray  
250 x 170 x 70 mm  
381221 Lid 250 x 170 mm  
381210 Instrument tray  
340 x 250 x 70 mm  
381211 Lid 340 X 250 mm  
381200 Instrument tray  
450 x 340 x 70 mm  
381201 Lid 450 x 340

3. 381685 Kidney dish rack – 6

4. 381515 Peg rack – 12

5. 381450 Shoe rack – 4 pairs

6. 381680 Insert for 4 urine bottles

7. 381690 Suction bottle rack  
• as per given dimensions

8. 381692 Tipping suction bottle insert  
– 2  
• as per bottle dimensions

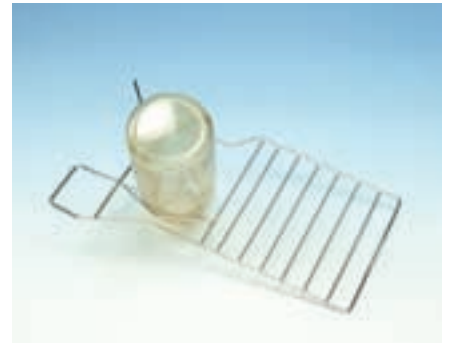
9. 381682 Hose rack – 6

10. 381683 Insert for Oras shower  
handles and hoses  
• 4 handles and hoses

6



7



8



9



10



# Technical Data

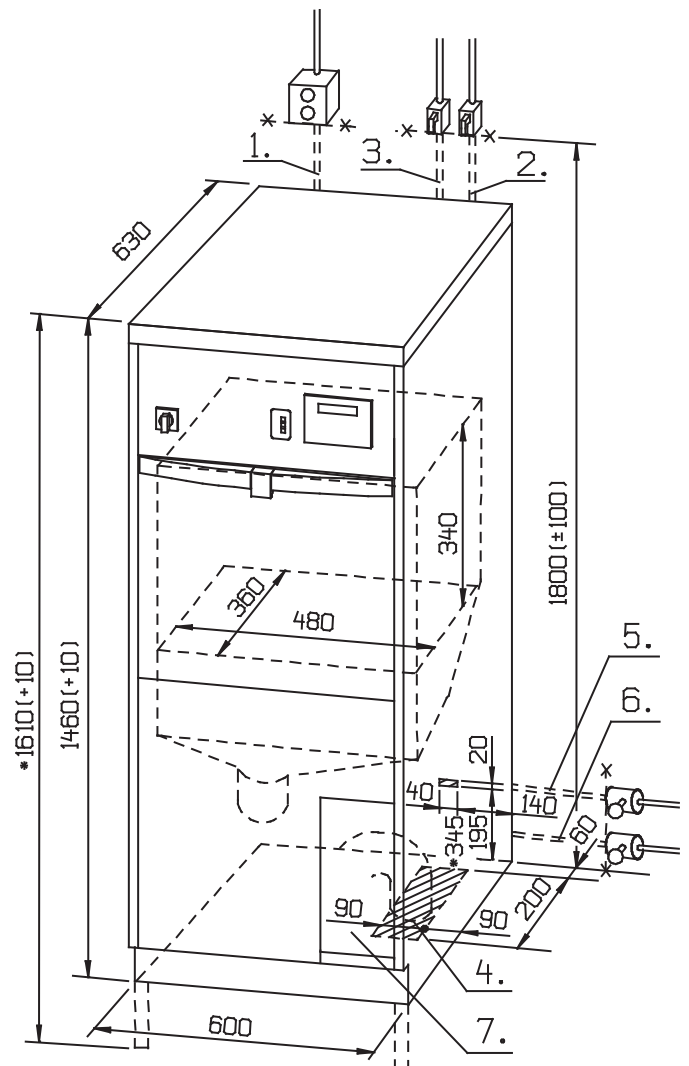
Model	190 LC
Outer dimensions, mm:	
Width	600
Depth	630
Height (* H150 mm legs)	1460/*1610
Weight, kg	130
Weight, lbs	287
Gross wash chamber volume, L	72
Inner dimensions, mm:	
Chamber height	640
Chamber width	480
Chamber depth	360
Water volume / one phase, excl.disinf., L	9
Electricity	240/400V 3N 50Hz 7.5kW 16A or, 240/400V 3N 50Hz 6.6kW 10A or, 120/208V 3N 60Hz 6.6kW 19A Further details at request.
Capacity & effects:	
Heating power kW	6.6 or 7.5
Circulation pump 600L/min, kW	1.5
Outlet size diameter in mm (4.)	90/110
Cold water hose L=2 m (2.)	R1/2"
Hot water hose L=2 m (3.)	R1/2"
Min/Max water pressure, bar	1/8
Min/Max water pressure, psig	15/115
Min/Max steam supply (S-model only), bar	1-3
Min/Max steam supply (S-model only), psig	15-45
Steam hose L=1,2 m (S-model only) (5.)	R1/2"
Condense L=1,2 m (S-model only) (6.)	R1/2"
Detergent container housing (7.)	
Height as standard 1460 mm. Available with +150 mm higher legs.	

## Models:

- electrically heated = Deko 190LCE
- steam heated = Deko 190LCS
- manual door
- A = automatic door

## Included as standard:

- holder for 2 bedpans
- 4 urine bottle nozzles
- wash shelf
- detergent pump



## Certificates / tests / approvals:

ISO 14001:1996  
 ISO 13485  
 SIS TR-3:2002  
 ISO EN 15883-1, 15883-3  
 IEC 61010-1  
 IEC 61010-2-040  
 IEC 61326-1  
 CE 0537

Subject to changes without further notice.  
 Please ask the supplier for confirmation as required.



**Industrial, Catering and Medical washing equipment**

72 -74 Woodlands Drive, Braeside, Victoria, 3195

PO Box 605 Braeside BC 3195

Tel: + 61 3 8586 5444

info@rhima.com.au

Rhima Australia Pty Ltd

Fax: + 61 3 8586 5454

www.rhima.com.au

ABN: 63 007 242 604

